



自动扶梯 自动人行道 Escalator & Autowalk

富士力电梯服务全世界

"FUSHILI" Elevator serves the customers in all walks of life.



www.zjmeilun.com.cn



浙江梅轮电扶梯成套有限公司

Zhejiang Meilun Complete Elevator Co., Ltd.

地址：中国浙江省宁波市江北区洪塘路557号

Address: 557 Meitong Road, Ningbo Industrial Area, Zhejiang

Zhejiang, China

总机/电话/传真: 86-076-6000111 8000111 8000000

手机/手提: 86-076-6000111

移动电话/手提: 86-076-6000000

手机/手提: 86-076-6000000

电邮: E-mail: zjmeilun@163.com

网址: www.zjmeilun.com.cn

FUJUSHILI® Elevator serves the
 customers in all walks of life.
富士力电梯服务全世界
 Win Victory By Superior Quality, Satisfy The customers' Requirements.
 Persistent Improve Menl. Make The Unremitting Efforts To Fulfill
 The Excellent Quality.
以质取胜 满足需求 持续改进 不优不休



目录

CATALOGUE

企业简介	1-2
Brief introduction	
公共交通型扶梯	3-4
Public traffic escalator	
自动扶梯系列	5-6
Escalator series	
自动人行道	7-8
Autowalk series	
标配功能	9
Standard function	
选配功能	10
Option function	
自动扶梯安全装置	11
Escalator safety device	
自动人行道安全装置	12
Autowalk safety device	
精品部件	13
Fine parts	
公共交通型扶梯土建	14
Public traffic escalator construction sketch	
30°自动扶梯土建	15
30° escalator construction sketch	
35°自动扶梯土建	16
35° escalator construction sketch	
单弧段人行道土建	17
single radian autowalk construction sketch	
双弧段人行道土建	18
Double radian autowalk construction sketch	
服务	19-20
Service	





富士力电梯工业有限公司总部工厂：
浙江梅轮电梯成套有限公司
Fushili Elevator Industry Co., Ltd. Headquarters
Factory：
Zhejiang Meilun Escalator Conveying Co., Ltd.

Brief Introduction 企业简介

浙江梅轮电梯成套有限公司前身为浙江绍兴梅轮齿轮制造厂，创建于1993年2月，1995年进军电梯行业并成为公司发展主业。公司主要生产“富士力”系列电梯、自动扶梯、自动人行道及各类电梯配件，产品远销欧亚、南北美洲、非洲、澳洲及中东国家地区。

公司是集产品研发、制造、销售（含进出口贸易）、安装、维修、改造及保养工程服务为一体的专业电梯公司，固定资产2.5亿。总部浙江绍兴工厂占地6.8万㎡，厂房建筑面积4.7万㎡，在建的江苏淮安电梯工厂总投资5.9亿，占地9.5万㎡，建筑面积7万㎡，将建成世界一流的电梯制造工厂。公司于2000年和2004年分别通过了ISO9002-1994和ISO9001-2000体系认证，2005年通过了欧盟电梯指令认证。

始终坚持以客户第一为前提，以“持续改进，不优不休”为质量宗旨，以回报社会为己任，公司愿与海内外朋友共同促进世界和谐发展而努力。

Zhejiang Meilun Complete Elevator Co., Ltd grows out of Zhejiang Shaoxing Meilun Gear Manufactory, founded in February 1993. It entered in a elevator line in 1995 and made it to be its main business. The company mainly produces "Fushili" series elevator, escalator, moving walk and all kinds of elevator fittings. Its products are sold for away to Europe, Asia, Northern and southern America, Africa, Australia Middle East.

The company is a professional elevator company which provides an integrated service of product designing, manufacturing, selling (export & import), installation, repairing, reconstructing and maintenance, having fixed asset 250 million. The headquarters lies in Zhejiang Shaoxing taking area 68000㎡ with workshop 47000㎡. The Jiangsu Hua'an factory which is in construction has total investment 590 million and will become the top elevator manufactory, occupying area 95000㎡ with workshop 70000㎡. The company acquired ISO9002-9004 and ISO9001-2000 certificates in 2000 and 2004 respectively and got CE elevator command certificate in 2005.

Our company bears unchanging belief of customer first, persistent improvement and no quality no break. It is determined to contribute to the society with continuous development. We are willing to make unremitting efforts to the world peace and development with all the friends around the world.



富士力电梯工业有限公司
江苏淮安工厂
Fushili Elevator Industry Co., Ltd.
Jiangsu Hua'an Factory

公共交通型扶梯 Public traffic escalator



富士力公共交通型扶梯是室外、地铁、地下商场、天桥等露天场所的理想电梯，其外型与功能设计上能满足场所设施的变换，使公共建筑更有格调和韵味，优良的防水设施、可靠的安全性能，倾注了富士力对社会的关怀。

"FUSHILI" public traffic escalator is an ideal choice for outside, metro, underground market, overbridge etc. the design on appearance and function are flexible to the site facilities, make the public structure harmonious and pleasant. Good water proof equipment, reliable safety function, demonstrate the goodness to the society from "FUSHILI".



上下之間 You have an extraordinary
人生意義非凡
meaningful life in up and down "FUSHILI" elevators.



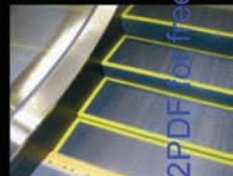
自动扶梯系列 Escalator Series

富士力自动扶梯以性能优良、实用、灵活的设计满足不同客户的需求。微机变频技术(VVVF)和人机工程学研究成果以及先进制造技术的优先运用,使富士力自动扶梯更趋完美、安全、舒适、节能、维修方便。

自动扶梯广泛应用于商场、超市、地铁、机场等客流量大的场所,富士力自动扶梯具备结构精巧、梯路优良、带路精致、外观造型精美、充满现代气息等特点。

"FUSHILI" escalator meets the different requirements from broad customers because of its superior properties, the practical and flexible design. The optimized utilization of microcomputer variable frequency technology (VVVF), ergonomics research fruits, the advanced manufacture technology bring about the more perfect, secure, comfortable FUSHILI escalator with the fine energy-saving and the convenient repair & maintenance.

Escalator is widely applicable for the occasions such as the shopping center, supermarket, subway, airport etc. with the large passenger flow. "FUSHILI" escalator is equipped with the features such as the fine and exquisite structure, the superior step, the delicate belt, the remarkable outline model and so on. It is richly endowed with the modern flavor.



能上能下 It can be both up and down

健康的人生最魅力

which lies the most attractive glamour for a healthy life

自动人行道系列 Auto walk Series



在缤纷的现代都市、大型超市、公共建筑物里、机场、展览中心及运输转换站等公共交通运输场合，自动人行道以其产品自身的特点，不仅能满足人流量巨大的运输问题，还能满足长距离步行和运送行李车、婴儿车、购物车、残疾人等使人们在乘坐的时候特别是在购物之际上下楼有如履平地的感觉，极大的方便了人们的出行和购物。其方便、快捷、愉悦的乘坐需要，由此也成为各大超市、机场、展览中心及运输转换站的首选解决方案。

富士力自动人行道外形豪华气派，极具时尚美感，能和大都市现代建筑和室内装饰和谐融合，完美地诠释了富士力技术先进、安全可靠、省电节能、平稳舒适的设计理念。

In the public traffic & transport occasions such as the gorgeous modern metropolis, the large-size supermarket, the public construction, the airport, the exhibition center, the transport change-over and so forth, the automatic walkway not only solves the transport problems of huge flow of people. What is more, after the people have the long-distance walk, or they are delivering the luggage barrow, baby cart, shopping vehicle, handicapped vehicle etc., as they are up and down the elevators at that time, they just feel as comfortable as they are walking on the level ground! It is greatly convenient for the people to go out and have shopping. Its easy, prompt and pleasant riding requirements result in the first-choice solution for various big supermarkets, the airports, the exhibition centers, the transport stations.

"FUSHILI" autowalk has the deluxe and imposing outlook. It appears to be aesthetically fashionable. It can harmoniously merge with the indoor decoration and the modern architectures in the large metropolis. It perfectly denotes the advanced technology, fine security and reliability, power and energy-saving, cozy and smooth design idea of "FUSHILI" Elevator.



平步青雲 Let's suddenly rise to fame and join

携看两岸美景

hands to appreciate the enchanted views on both

sides of the River banks

标准功能 Standard Function



滚轮内置梯级 Step Chain-Roller Inbuilt roller step chain
滚轮内置于专门设计的滚轴梯级链，能有效实现降低驱动运行时的噪音，使运行更加平稳和宁静。

The roller has been internally installed in the specially-designed roller step chain. It can effectively fulfill the reduction of the noise during the driving process and bring about a more smooth and quiet operation.



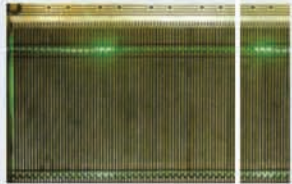
自动加油 Automatic Oiling
PLC控制自动加油润滑系统，实现了在扶梯运行过程中给传动链理想的自动润滑，不仅减轻了日常维护保养工作量，而且可以延长传动机构的使用寿命。

PLC control automatic oiling and lubricating system fulfills the ideal automatic lubrication to the transmission chain during the running process of the escalator. It not only reduces the daily repair and maintenance work load, but also prolongs the service life of the driving mechanism.



斜扶手 Inclined Handrail
采用不锈钢封闭式斜扶手扶梯，适合于客流量大，承载量重，用于公共交通运输的场所。能最大限度的扩展乘梯空间，提高在客流量较大时的有效安全系数。

It adopts the stainless steel enclosed and inclined handrail escalator. It is fit for the occasions with the large stream of people, heavy loading. It can extend the riding space to the greatest extent and increase the effective safety coefficient when there is the large flow of people.



梯级警示灯 Demarcation Lamp
绿色荧光灯安装在口部和下部梯级踏板，当两连接梯级运行错开时，绿色荧光便从梯级的齿口中照出，以帮助乘客识别梯级进出水段，提高乘梯安全。

The green fluorescent lamp has been installed under the upper and lower step tread. When the staggered running of two connecting steps, it is green fluorescent light will be sent out from the step teeth in order to help the passengers identify the step inlet and outlet horizontal section and enhance the riding safety.



扶手入口 Handrail Inlet
新颖、精致、优雅、张力丰富有现代化流线型扶手带出入口设计造型，赋予扶梯以灵性和亲和力，更具美观，彰显出与之相配套的建筑物的尊贵与气派。

The escalator is richly endowed with the intelligence and popularity by the novel, distinctive, elegant, tensile and modernized streamline handrail inlet and outlet design model. It appears to be more beautiful in the outer appearance. It displays the nobleness and imposing manner of the conveying constructions.



立式曳引机 Table Type Traction Machine
具有平滑的啮合和摩擦减少，确保特别低的噪音，能减少噪音60%以上，与传统的蜗轮驱动相比有更大的驱动效率。

It has the smooth engagement and the frictional reduction. It guarantees the extremely low noise. It can reduce more than 60% of the noise. Compared with the traditional worm wheel drive, it has the higher driving efficiency.

选配功能 Option Function



运行方向指示 Running Direction Indication
运行方向和禁止行显示标识置于扶手带出入口处，以显而易见的方式运行或禁止行指示，确保乘客安全自如地乘坐。

The running direction and forbidden display mark have been placed in the inlet and outlet of the handrail. The obvious running or forbidden instruction ensures the safe riding of the passengers with great ease.



围裙板刷 Skirt Panel Brush
安装于围裙板两侧位于梯级上面的围裙板刷以避免乘客的鞋子碰到围裙板和能安全有效地防止异物被带入梯级。

The skirt panel brush is in the higher position of the step. It has been installed on both sides of the skirt panel. It can prevent the passengers' shoes from scratching the skirt panel. It also avoids the foreign substance from entering into the steps in a safe and effective way.



**VVVF变频控制系统
VVVF Variable Frequency Energy-Saving System**

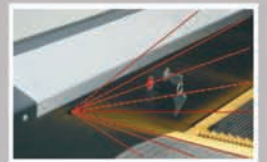
选用频率变换器后，能有效的降低能源消耗，在人流稀少的场合通常节能30%，并能有效减少峰值电流80%。在空载情况下，自动扶梯以低速运行。当检测到乘客接近时即恢复正常速度运行。

The use of the frequency converter can effectively cut down the energy loss. It can usually save 30% of the energy in the occasions with the scarce stream of people. Under the no-load circumstances, the escalator operates at a low speed. It will immediately restores to the normal speed running when it detects the approach of the passengers.



扶手照明 Handrail Illumination
扶手照明安装在扶手支架内，柔和的光线为运行中的自动扶梯增添了几分灵气。

The handrail illumination has been installed in the handrail support. The gentle light adds charm to the running escalator.

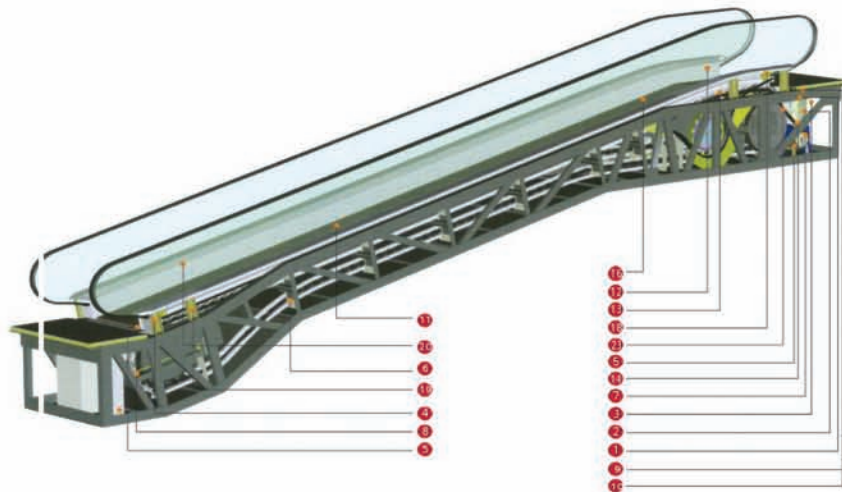
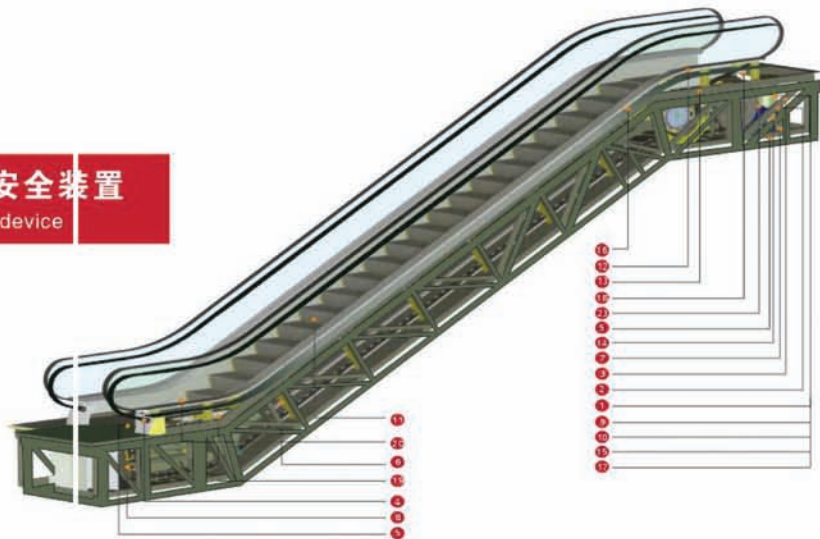


自动启动/停止 Automatic Start/Stop
位于楼层板附近的红外线传感器可以检测到进入楼层板的乘客，并自动开始运行。当所有乘客离开后会自动停止运行，以节约能耗。有扫描传感器和传统的导向杆方式可供选择。

The infrared ray sensor which is near the floor plate can detect the Passenger that enter into the floor plate. After all the passengers leave, it will automatic stop the operation again in order to save the energy loss. Scanning sensor and traditional guide rod are available for your choice.

自动扶梯安全装置

Escalator safety device



自动人行道安全装置

Autowalk safety device

标准安全装置

Standard Safety Device

1. 缺相、错相保护 Lack of phase, error phase protection

如发生故障或错相, 自动扶梯(自动人行道)将自动停止。
If lack of phase or error phase has been checked out, the escalator (auto-walk) will automatically stop the operation.

2. 马达超载保护 Motor overload protection

电流超过额定电流的15%时, 自动扶梯(自动人行道)将自动停止运行。
When the current exceeds 15% of the current rating, the escalator will automatically stop the operation.

3. 电器回路保护 Electrical appliance loop protection

提供自动电路断开装置以保护自动扶梯(自动人行道)的电路和电源部件。
It offers the automatic circuit disconnecting device to protect the circuit and mains components of the escalator (auto-walk).

4. 扶手带入口保护 Handrail inlet protection

当异物被夹在扶手带入口处时, 自动扶梯(自动人行道)将自动停止运行。
When some foreign substance has been clipped in the handrail inlet, the escalator (auto-walk) will automatically stop the operation.

5. 梳齿板安全保护装置 Comb plate safety device

当异物被夹入梳齿时, 自动扶梯(自动人行道)将自动停止运行。
When some foreign substance has been clipped in or between the combs, the escalator (auto-walk) will automatically stop the operation.

6. 梯级塌陷保护装置 Step sagging protection device

当发现梯级有异常的弯曲时, 自动扶梯(自动人行道)会在梯级进入梳齿板前停止运行。
When there is abnormal step bending, the escalator (auto-walk) will stop the operation before the step entering into the comb plate.

7. 驱动链断裂保护 Broken drive-chain safety device

当驱动链被过度拉伸或断裂时, 自动扶梯(自动人行道)将自动停止运行。
When the drive-chain has been over-stretched or it is broken, the escalator (auto-walk) will automatically stop the operation.

8. 梯级链断裂保护 Broken step chain protection

当梯级(板)链被过度拉伸或断裂时, 自动扶梯(自动人行道)将自动停止运行。
When the step (plate) chain has been over-stretched or it is broken, the escalator (auto-walk) will automatically stop the operation.

9. 超速保护 Over-speed protection

当自动扶梯(自动人行道)超速, 将自动停止运行。
When there is over-speed to the escalator (auto-walk), it will automatically stop the operation.

10. 非操作逆转保护 Direction reversal protection

当逆转操作而违反了预定的运行方向, 自动扶梯(自动人行道)将自动停止运行。
When it comes the unintentional reversal of the direction of travel, the escalator (auto-walk) will automatically stop the operation.

11. 警戒线 Security line

黄色合成树脂警戒线位于自动扶梯踏板的顶部和两边, 以防止乘客踏入相邻梯级的边缘及梯级和围裙板之间, 在梯级两边的警戒线高于踏板表面(自动人行道提供可选黄色喷漆警戒线)。
The yellow synthetic resin security line is located in the front position and two sides of the escalator tread so that the passengers will not tread in-between the edge of the adjacent step and the skirt panel. The security line on both sides of the step is higher than the tread surface. (The auto-walk offers the selective yellow spray-painted security line.)



12. 紧急停止按钮 Emergency stop button

当按下该按钮时, 自动扶梯(自动人行道)将停止运行。
When the button has been pressed down, the escalator (auto-walk) will stop the operation.

围裙板保护 Skirt panel protection

当异物被夹在围裙板和梯级之间时, 自动扶梯(自动人行道)将自动停止运行。
When some foreign substance has been clipped in between the skirt panel and the step, the escalator (auto-walk) will automatically stop the operation.

14. 制动器保护 Brake protection

当电力不足或任一安全装置动作时, 制动装置将通过弹簧弹力作用使制动功能生效, 使自动扶梯(自动人行道)停止运行。
When the electric force falls short of supply or it acts any of the safety device, the brake function goes into effect by the safety device through the spring resilience action. In this way, the escalator (auto-walk) stops the operation.

15. 检修安全开关 Safety inspection switch

检修保养时, 防止扶梯启动的安全装置。
It is a safety device to prevent from the escalator starting during the inspection and maintenance.

16. 梯级照明 Step illumination

扶梯上下端, 梯级下部装有照明以提醒乘客注意安全。
Illumination is installed in the upper and lower ends of the escalator, in the lower part of the step in order to remind the passengers of the security matters.

17. 启动警铃装置 Alarm bell starting device

扶梯启动时, 警铃响起, 以提醒乘客安全。
The alarm bell rings when it starts the escalator in order to remind the passengers of the security matters.

18. 扶手带断裂保护装置 Control device for handrail breakage

当扶手带断裂时, 自动扶梯将停止运行。
When the handrail is broken, the escalator will automatically stop the operation.

可选用的安全装置

Optional Safety Device

19. 扶手带速度监控 Handrail speed monitor

如果扶手带速度比梯级慢于一定百分比, 自动扶梯(自动人行道)将停止运行。
When the handrail speed versus step is slower than certain percentage, the escalator (auto-walk) will stop the operation.

20. 围裙板刷 Skirt panel brush

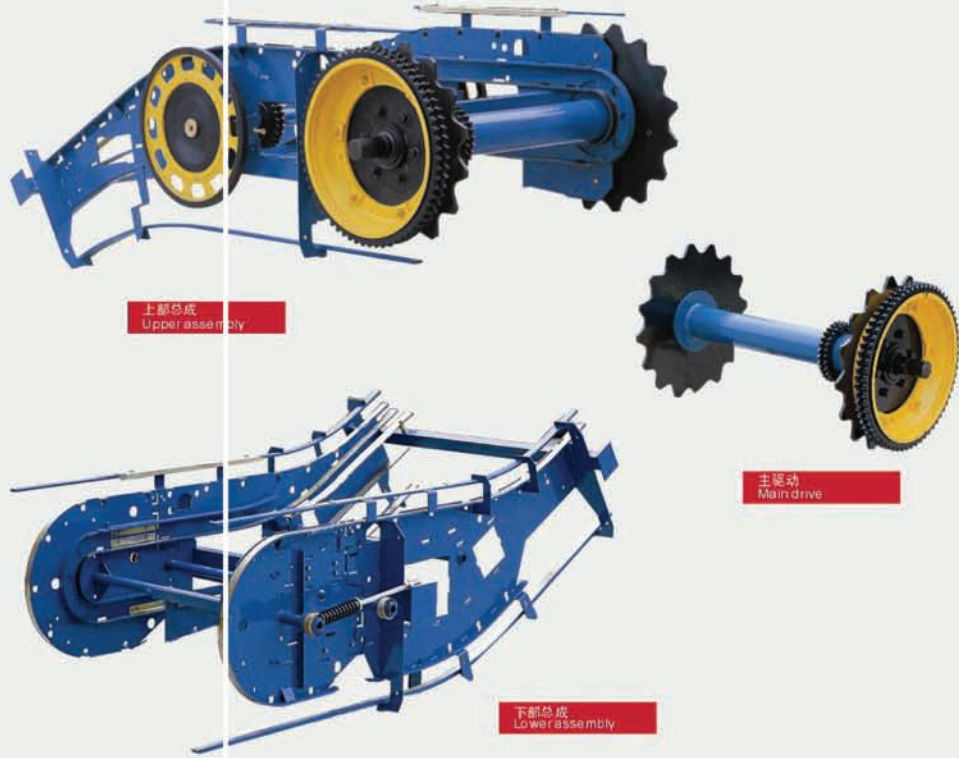
可选用的安全装置, 在围裙板和梯级之间装有刷子使乘客的鞋子不会碰到围裙板(不仅限于自动扶梯)。
It is a selective safety device. The brush that has been installed between the skirt panel and the step will prevent the passengers from touching the skirt panel. (It is not merely restricted to the escalator.)

23. 紧急制器 Emergency brake

驱动链断裂或制动失灵防止扶梯下滑确保人员安全。(6m<H时必须配备)
It prevents from the escalator slide and ensures the human security in case of the drive chain breakage or the out-of-order of the brake. (It should be allocated with the emergency brake when 6m<H.)



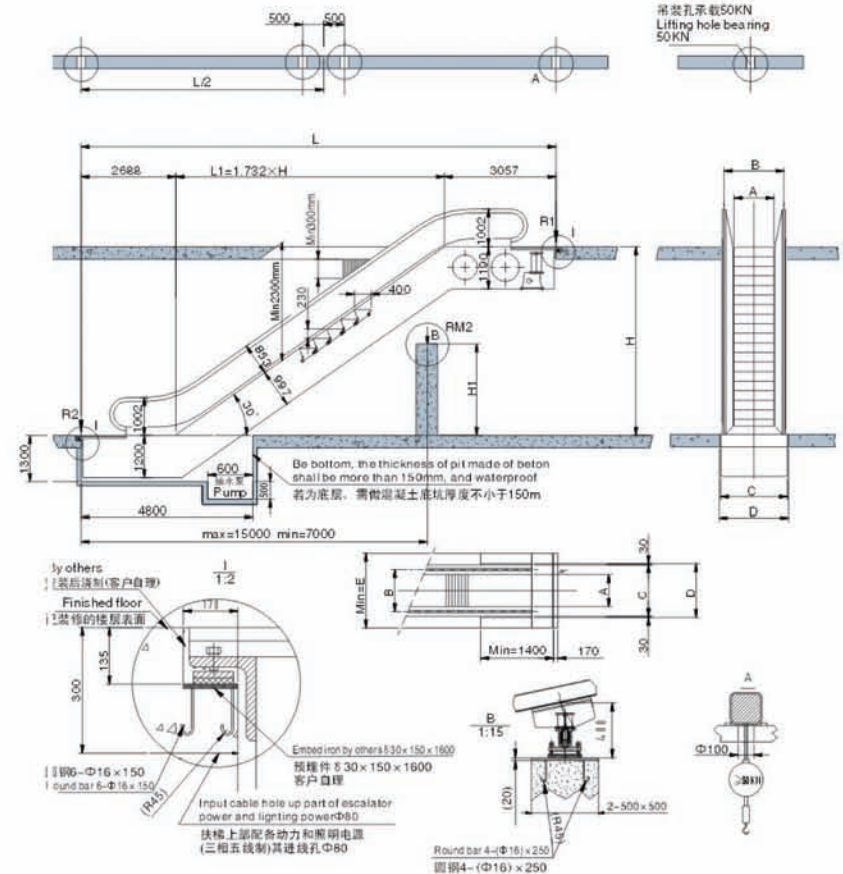
精品部件 Fine parts



参数表 specifications

型号 Model	倾斜角度(°) Angle of inclination	梯级宽度(m) Step width	水平梯级数 Number of horizontal stair-steps	提升高度(m) Travelling height	中间支撑 Intermediate supports	紧急制动 Emergency braking	梯级链节距 Pitch of stair-step chain	主驱动轮节距 Pitch of principal driving wheel	主轮直径 Diameter of principal wheel	备注 Remarks
SDS	30°	600-1000	2-3	≤6m	无/NO	无/NO	133.33	31.75	70	-
SDS	35°	600-1000	2-3	≤6m	无/NO	无/NO	133.33	31.75	70	-
SWE	30°	600-1000	2-3	≤6m	无/NO	无/NO	133.33	31.75	70	-
SWE	35°	600-1000	2-3	≤6m	无/NO	无/NO	133.33	31.75	70	-
SDS	30°	600-1000	3	6-8m	有/YES	有/YES	133.33	31.75	70	-
SWE	30°	600-1000	3	6-8m	有/YES	有/YES	133.33	31.75	70	-
SWT	30°	800-1000	3	8-10m	有/YES	有/YES	133.33	38.1	80	双驱动 Double drive
SWT	30°	800-1000	3-4	≤17.5m	有/YES	有/YES	133.33	38.1	80	

公共型扶梯土建图 Public traffic escalator construction sketch

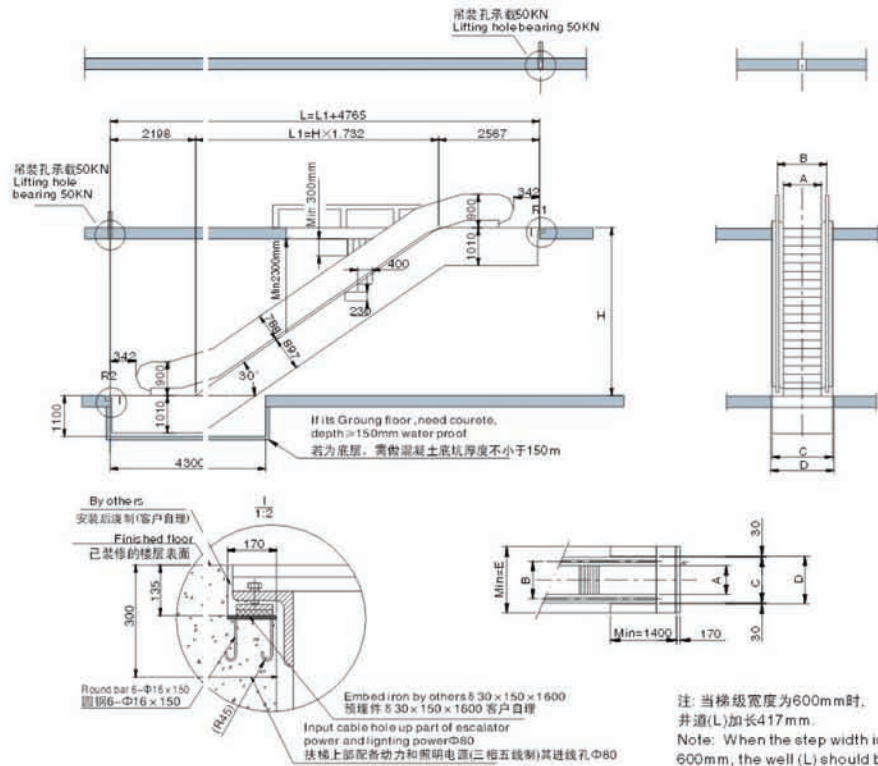


参数表 specifications

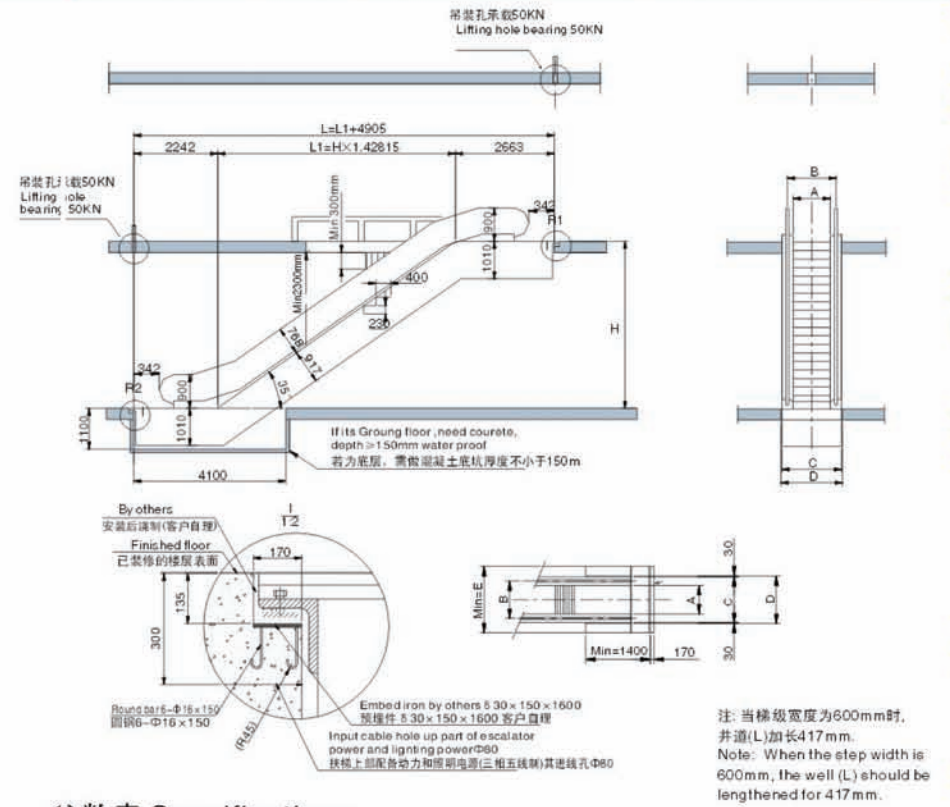
型号 Model No.	FGL30-800 (750P/804)						FGL30-1000 (920P/904)					
	NW (KN)	F1 (KN)	F2 (KN)	FM1 (KN)	FM2 (KN)	P (KW)	NW (KN)	F1 (KN)	F2 (KN)	FM1 (KN)	FM2 (KN)	P (KW)
6500 17003	88	84	76	105		13	91	88	76	109		13
7000 17869	92	87	80	110		13	95	91	79	115		13
7500 18735	95	91	79	115		15	98	94	83	120		15
8000 20081	98	95	83	122			103	98	86	125		
8500 20947	104	99	89	127			106	104	91	127		
9000 21813	107	113	93	133		11×2	109	120	96	133		11×2
9500 22679	110	117	100	139			112	126	102	139		
10000 23545	113	121	102	145			115	132	107	145		

型号 Model No.	A	B	C	D	E
FGL30-800	800	1110	1400	1450	2037
FGL30-1000	1000	1310	1600	1660	2207

30° 自动扶梯土建图 30° escalator construction sketch



35° 自动扶梯土建图 35° escalator construction sketch



参数表 Specifications

型号 Model NO.	FSL30-600 (4500p/hour)				FSL30-800 (6750p/hour)				FSL30-1000 (9000p/hour)			
	N.W.	Static load R1	Static load R2	Motor power	N.W.	Static load R1	Static load R2	Motor power	N.W.	Static load R1	Static load R2	Motor power
Rising height MM	KN	KN	KN	KN	KN	KN	KN	KN	KN	KN	KN	KN
3000	57	46	41	5.5	59	52	47	5.5	60	56	50	5.5
3500	60	49	44	5.5	63	56	50	5.5	64	60	53	8.0
4000	64	52	47	5.5	67	60	54	5.5	67	64	57	8.0
4500	68	56	50	5.5	71	64	57	8.0	71	67	60	8.0
5000	71	59	53	8.0	74	68	60	8.0	74	71	64	11
5500	75	62	56	8.0	82	74	66	11	82	77	69	11
6000	79	65	59	11	86	78	69	11	85	81	72	11

型号 Model NO.	A	B	C	D	E
FSL30-600	600	837	1200	1260	1837
FSL30-800	800	1037	1400	1460	2037
FSL30-1000	1000	1237	1600	1660	2237

参数表 Specifications

型号 Model NO.	FSL35-600 (4500p/hour)				FSL35-800 (6750p/hour)				FSL35-1000 (9000p/hour)			
	N.W.	Static load R1	Static load R2	Motor power	N.W.	Static load R1	Static load R2	Motor power	N.W.	Static load R1	Static load R2	Motor power
Rising height MM	KN	KN	KN	KN	KN	KN	KN	KN	KN	KN	KN	KN
3000	54	43	39	5.5	56	49	44	5.5	60	56	50	5.5
3500	57	43	41	5.5	60	52	47	5.5	64	60	53	8.0
4000	60	49	44	5.5	63	56	50	5.5	67	64	57	8.0
4500	64	52	46	5.5	66	59	5	8.0	71	67	60	8.0
5000	67	54	49	8.0	70	62	56	8.0	74	71	64	8.0
5500	70	57	51	5.5	73	65	59	8.0	82	77	69	11
6000	73	60	54	8.0	76	69	61	8.0	85	81	72	11

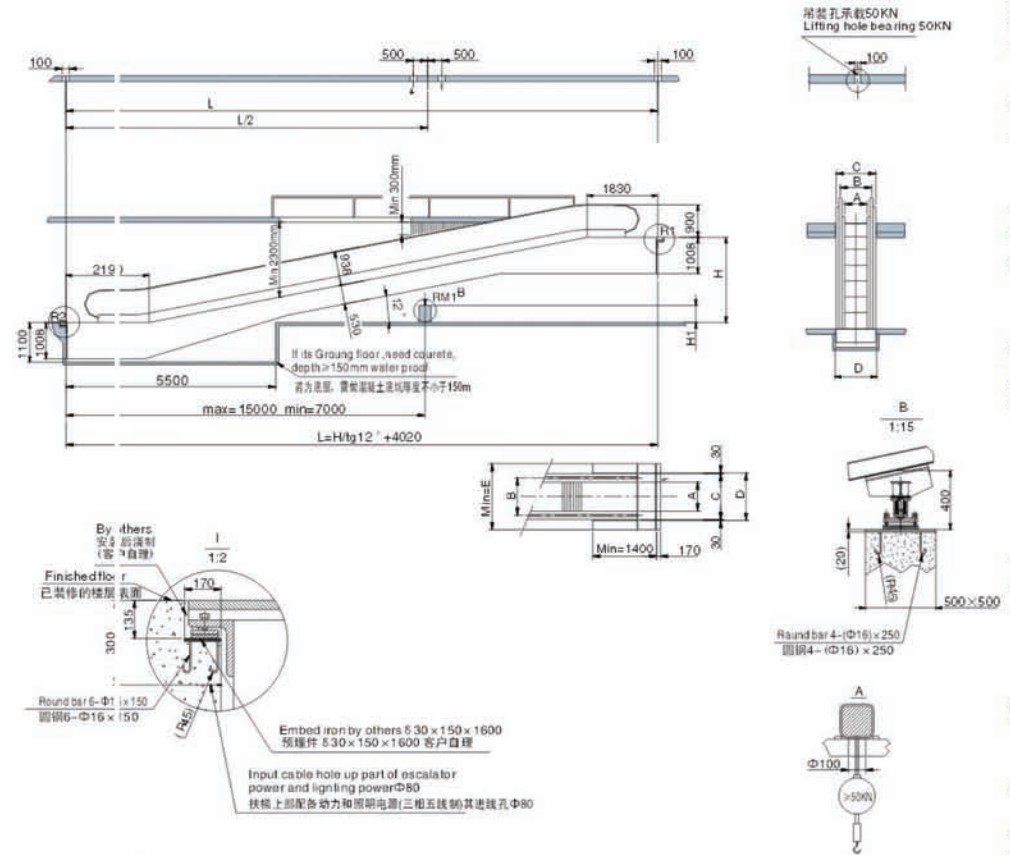
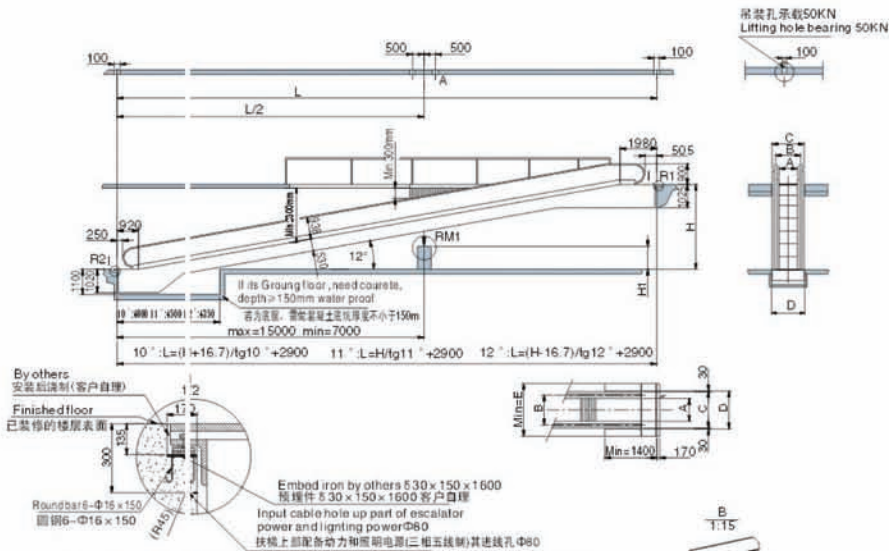
型号 Model NO.	A	B	C	D	E
FSL35-600	600	837	1200	1260	1837
FSL35-800	800	1037	1400	1460	2037
FSL35-1000	1000	1237	1600	1660	2237

单弧段人行道土建图

single radian autwalk construction sketch

双弧段人行道土建图

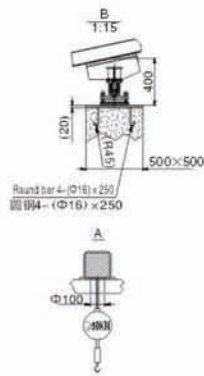
Double radian autwalk construction sketch



10°		A=1000						A=800					
H (mm)	L (mm)	N (KN)	R1 (KN)	R2 (KN)	RM1 (KN)	RM2 (KN)	P (KW)	N (KN)	R1 (KN)	R2 (KN)	RM1 (KN)	RM2 (KN)	P (KW)
2500	17175	10	51	43	85			87	45	37	74		
3000	20010	110	57	49	96		8	97	51	43	85		8
3500	22846	111	65	56	108			107	58	49	96		
4000	25682	121	70	62	120			117	62	55	106		
4500	28517	122	77	68	131			127	68	60	115		
5000	31353	122	85	75	142		11	137	74	66	125		11
5500	34188	133	86	77	148			147	77	69	134		
6000	37024	133	93	83	160		13	157	83	75	143		13

11°		A=1000						A=800					
H (mm)	L (mm)	N (KN)	R1 (KN)	R2 (KN)	RM1 (KN)	RM2 (KN)	P (KW)	N (KN)	R1 (KN)	R2 (KN)	RM1 (KN)	RM2 (KN)	P (KW)
2500	15761	5	49	41	78			82	43	35	67		
3000	18334	4	55	47	89		8	91	49	41	78		8
3500	20906	134	61	53	99			100	54	46	87		
4000	23478	114	68	59	112			110	60	52	98		
4500	26050	123	73	65	124			119	65	57	107		
5000	28623	133	80	71	135		11	128	70	61	117		11
5500	31195	142	86	77	148			137	76	67	127		
6000	33767	152	92	83	160		13	146	82	73	136		13

12°		A=1000						A=800					
H (mm)	L (mm)	N (KN)	R1 (KN)	R2 (KN)	RM1 (KN)	RM2 (KN)	P (KW)	N (KN)	R1 (KN)	R2 (KN)	RM1 (KN)	RM2 (KN)	P (KW)
2500	14582	10	46	38	72			78	41	33	63		
3000	16934	19	52	44	83		8	86	46	38	72		8
3500	19286	18	58	50	93			95	51	43	81		
4000	21639	177	64	55	104			103	56	48	90		
4500	23991	115	69	61	115			111	61	53	99		
5000	26343	134	75	66	125		11	120	66	57	109		11
5500	28695	133	81	72	136			128	71	62	118		
6000	31048	142	87	78	147		13	136	76	67	127		13



	10° FSL 11°-800 6750P/H	10° FSL 11°-1000 9000P/H
A	800	1000
B	1037	1237
C	1400	1600
D	1460	1660
E	2037	2237

H (mm)	L (mm)	A=1000						A=800					
		N (KN)	R1 (KN)	R2 (KN)	RM1 (KN)	RM2 (KN)	P (KW)	N (KN)	R1 (KN)	R2 (KN)	RM1 (KN)	RM2 (KN)	P (KW)
2500	15782	82	48	40	74			80	43	35	65		
3000	18134	91	54	45	85		8	88	48	40	74		8
3500	20486	100	60	52	95			97	53	45	83		
4000	22838	109	66	57	106			105	58	50	92		
4500	25191	117	71	62	117			113	63	55	101		
5000	27543	126	77	68	127		11	122	68	59	110		11
5500	29895	135	83	74	138			130	73	64	120		
6000	32248	144	89	80	149		13	138	78	69	129		13

H (mm)	L (mm)	A=1000						A=800					
		N (KN)	R1 (KN)	R2 (KN)	RM1 (KN)	RM2 (KN)	P (KW)	N (KN)	R1 (KN)	R2 (KN)	RM1 (KN)	RM2 (KN)	P (KW)
2500	15782	82	48	40	74			80	43	35	65		
3000	18134	91	54	45	85		8	88	48	40	74		8
3500	20486	100	60	52	95			97	53	45	83		
4000	22838	109	66	57	106			105	58	50	92		
4500	25191	117	71	62	117			113	63	55	101		
5000	27543	126	77	68	127		11	122	68	59	110		11
5500	29895	135	83	74	138			130	73	64	120		
6000	32248	144	89	80	149		13	138	78	69	129		13

	10° FSL 11°-800 6750P/H	10° FSL 11°-1000 9000P/H
A	800	1000
B	1037	1237
C	1400	1600
D	1460	1660
E	2037	2237

服务

Service

FUSHILI ELEVATOR



服务不仅仅是要保证安全，保障您在设备方面的投资。真正的服务是预见和满足顾客特别的需求。正因为服务的定义随着顾客需求的不同而不同，我们满足这些需求的方法也是广泛而且个性化的。

Our service should not only ensure your security, but also guarantee your investment in the equipment aspects. The true service is to foresee and satisfy the special requirements from vast customers. Because the service definition varies according to the customer's demands. Therefore we should have the extensive and characteristic methods in satisfying these requirements.

我们的员工提供一年365天，每天24小时的服务。我们全国性的服务网络和备品备件中心保证了最快的反馈和最短的停机时间。

Our personnel offers the services 24 hours a day and 365 days a year. Our nation-wide serving network and parts center ensure the most prompt feedbacks and the shortest possible stopping period.

您为您的顾客提供良好的服务是您最优先的任务，富士力电梯公司对您也有同样的承诺。

Your most prior task is to provide your customers with the sound service. This is the very same promise made to you by us FUSHILI ELEVATOR COMPANY.

富士力电梯坚持认为一件产品的完美要求，其产品本身及其卓越品质不是全部，只有加上完善的和高标准的服务保障，才能为客户创造最大化的满意，客户也才能真正获得该产品品质的超值享受。富士力电梯正是以独特的服务理念服务于广大的客户的。富士力电梯对客户提供的服务包括：分析建议、客户培训、系统运行维护、远程监控、响应时间、热线支援、垂询支援以及优质备件库建设等方面。覆盖于整个过程之中，我们深信惟有对事物一丝不苟，才能达到至善至美。所有这些都将会保证您的电梯运行达到最佳状态。

"FUSHILI" lift persists in the concept that the perfect requirements to a product does not merely mean the product itself and its advantageous performance. Only has it been added with the perfect and high standard service guarantee, can it bring about the max. Satisfaction to vast users, and only in this way, can the users truly enjoy the value-added pleasure from the product quality. "FUSHILI" lift is serving the progressively-increased customers by this very heart-and-soul serving idea. "FUSHILI" provides extensive customers with the services including analysis suggestion, customer training, systematic running maintenance, long-distance monitor, responsive time, hotline support, inquiry support, superior parts warehouse construction and so on. They have been covered in the whole process. We are firmly convinced that only are we scrupulous about every detail, can it reach the acme of perfection. All these will guarantee the finest condition of your lift running.



售前—热情 Before-sale – enthusiastic

详细的解释产品的性能特点及使用范围，尽可能让客户了解富士力公司的产品，服务及优势。

It explains the product properties, features and use ranges in detail in order to let the customers know the products, service and advantages of FUSHILI COMPANY to the greatest extent.

售中—公正 Mid-sale – impartial

在交易的过程中，富士力公司尽可能的为您想的更多，且一切都在公平的原则下进行。

FUSHILI COMPANY considers more for you as far as possible during the transaction process. What is more, all has been done under the impartial principle.



售后—满意 After-sale – satisfaction

对售出的任何一台电梯都将实施完善的售后服务及终生实行维修保养，这是我们给您保障，了却您的后顾之忧。

It implements the perfect after-sale service and life-long repair & maintenance to every lift which has been sold to the customers. This is our solemn guarantee to you. In this way, you can be rest assured in purchasing our products.

